

PROPULSION MAKER SINCE 1908





COMPANY PROFILE

QUALITY RELIABILITY PERFORMANCES



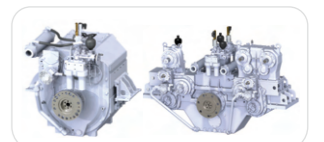
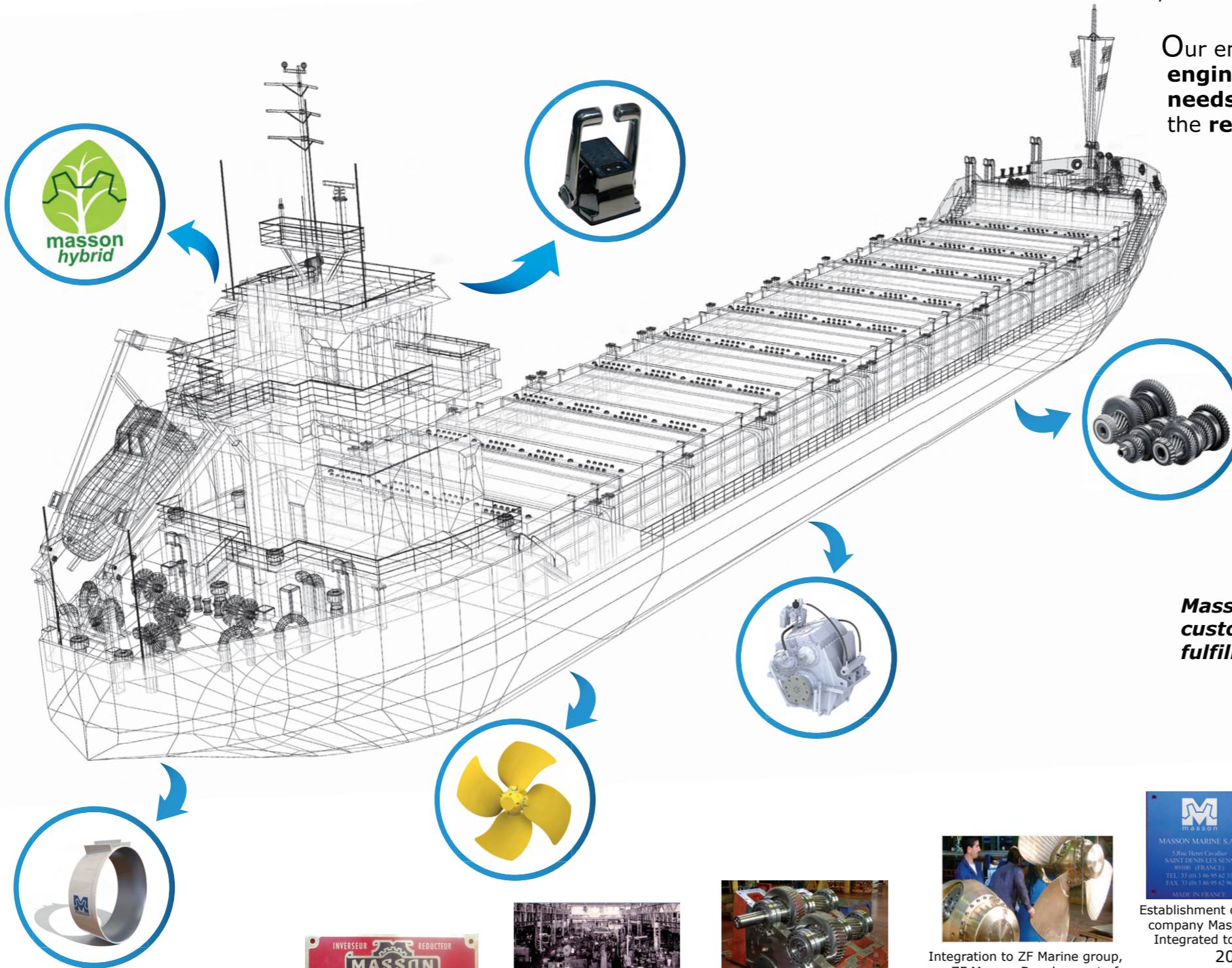
Masson Marine, as a **leader in Marine Propulsion Technology**, designs, manufactures in France and commissions a full range of **marine gearboxes** with **hybrid systems**, **brakes** whether integrated or external, **shaft lines** and **controllable** or **fixed pitched propellers**.

Our engineering team skilled with both **marine** and **mechanical engineers** achieves the **best products** designed for your **specific needs**. We are internationally renowned for over **110 years** for the **reliability** and **durability** of our products.

Masson Marine offers a wide range of high quality and high performance products **adapted to all propulsion systems** (Diesel, Gas, Electric). Our reduction gearboxes and propellers comply with the **quality standards** of **all major brand engine manufacturers all over the world**.

Masson Marine is proud to provide a **high-efficient marine propulsion system**, helping ship owners and operators to **optimize operation costs** and **reduce time for maintenance operation**. A wide range of different ship types are propelled and served by Masson Marine: more than **28.000** Masson Marine gearboxes and **1.000** Controllable Pitch propellers on various ships that are operating around the world.

Masson Marine is committed to his customers and will do everything to fulfill its engagements.



Commercial release of the W3100 and redesign of the W2800Y
2021



Enlargement of the range W1900 series & W2900

2016-2017



Development of the first hybrid solution.
2011



Establishment of the independent company Masson Marine SAS . Integrated to Azimuth Group.
2006



Integration to ZF Marine group, as ZF Masson Development of the Controllable Pitch Propellers
2000's



Integration to MAN/Renk group, as SEE (Societe Europeenne d'Engrenages)
1980's



Integration to Pont-a-Mousson group (PAM) transfer of the company to Saint Denis lessens.
1970's



Establishment of the company in Courbevoie (near Paris)
1908

THE RANGE THAT YOU NEED

QUALITY RELIABILITY PERFORMANCES



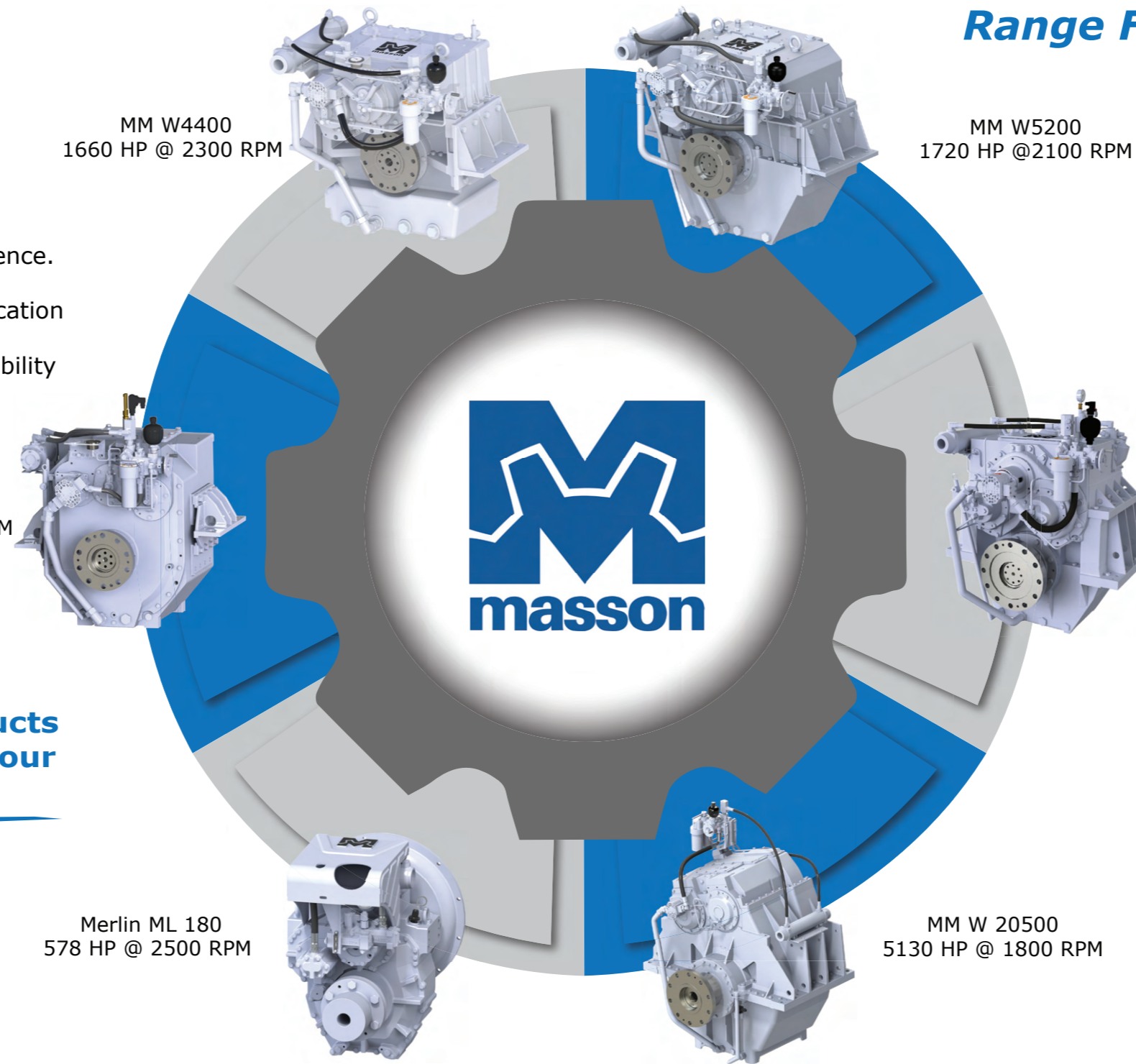
Range From 200 HP to 5000 HP

Quality culture:

- Strong R&D backed by 110 years of experience.
- High quality control for each critical parts.
- Complying with the most important classification societies.
- Our products offer the highest level of durability

Hybrid Solutions Available :

- PTO (Power Take Off)
- PTI (Power Take In)
- Dual speed gearbox
- Twin input / single output gearbox



Options Available :

- Trolling Valve
- Trailing Pump
- Bell housing (from #4 to #00)
- Shaft brake (integrated or external)
- Classification
- Coupling
- RCA for higher ratio

The full range of our products is available on request in our selection guide.

Cinematics

- Reduction gearboxes
- (NR) Non Reversing
- Horizontal or Vertical offset and (C) Coaxial
- (EW) Engine wise
- (CEW) Counter Engine Wise
- (NC) Non Clutchable for electric engine
- Twin input / Single output



Yacht



Patrol boat



Inland vessel



Fishing boat



Tug boat

Our products can have type approval or full class from the main classification companies (IACS)



PACKAGE SOLUTION of MASSON MARINE

QUALITY RELIABILITY PERFORMANCES

Masson Marine designs, manufactures and commissions the whole propulsion system from the engine fly wheel to the blades, including gearbox, shaft, propeller, sterntube, remote control system.



Fixed Pitch Propellers (FPP)



Masson Marine has **many years of experience** in propeller design. We are able to customize your propeller to ensure the **optimum performance** both in terms of **thrust** and **efficiency**.



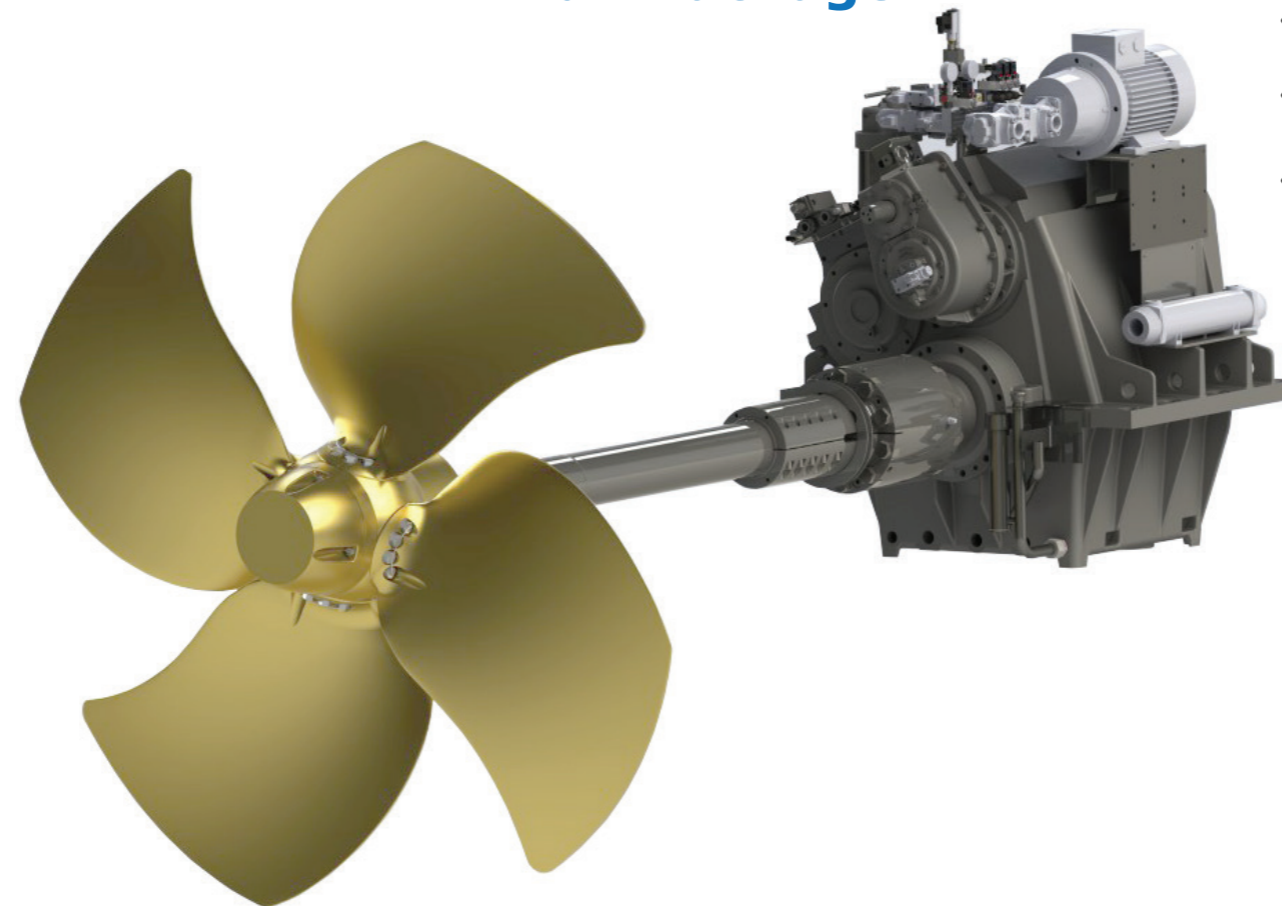
EPI SUCESSO (Tug Boat)
Engines : 2 x CAT 3512B - 2600HP
Gearboxes : 2 x MM W7400
Propellers : FPP



Available Configuration

- Oil or Water lubricated
- Open or ducted propeller (Nozzle)
- 4 or 5 blades (on demand)

Full Package



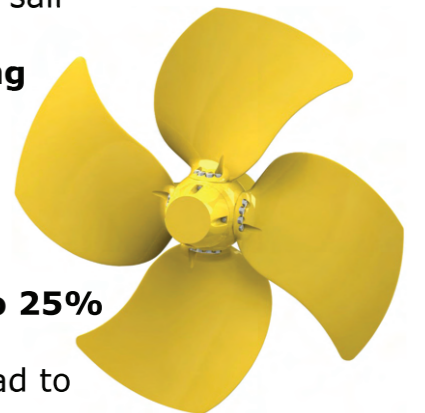
The benefits of the package solution:

- **Turnkey solution** for the propulsion offers many benefits from **conception** to **commissioning** and for the **complete vessel's life**.
- **"One-stop" solution** for project management.
- **Optimized design** with ratio selection and propeller design.

Controlable Pitch Propellers (CPP)

Nowadays, ships are polyvalents and sail under several modes of application, CP Propellers are **perfectly matching** with vessels **requiring different propulsion conditions** for speed, thrust or maneuverability. They offer many technical and commercial advantages:

- **Higher efficiency** than a FPP (**up to 25%** thanks to variable pitch).
- **Better maneuverability** (from ahead to astern without de-clutching)
- **Full power available** under all conditions



AN KANG (Towing Tug)
Engines : 2 x GE 8V-228-900 rpm
Gearboxes : 2 x MM W18000 NR
Propellers : 2 x CPP MMS 640
Shipyard : SLS Korea

INNOVATIVE SOLUTION HYBRID SYSTEMS

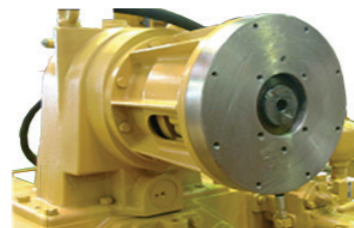
QUALITY RELIABILITY PERFORMANCES



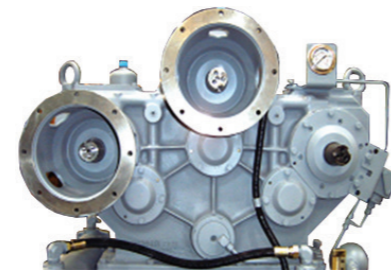
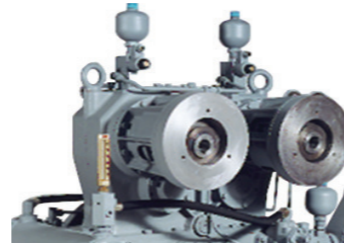
Power Take Off:

- From **250 Nm** to **5300 Nm**.
- Up to **3 outputs** (live or clutchable).
- Wide possibilities of output (swing bridges, nets, water pumps, generators).
- Can **replace engines** aboard the boat.

Simple Output



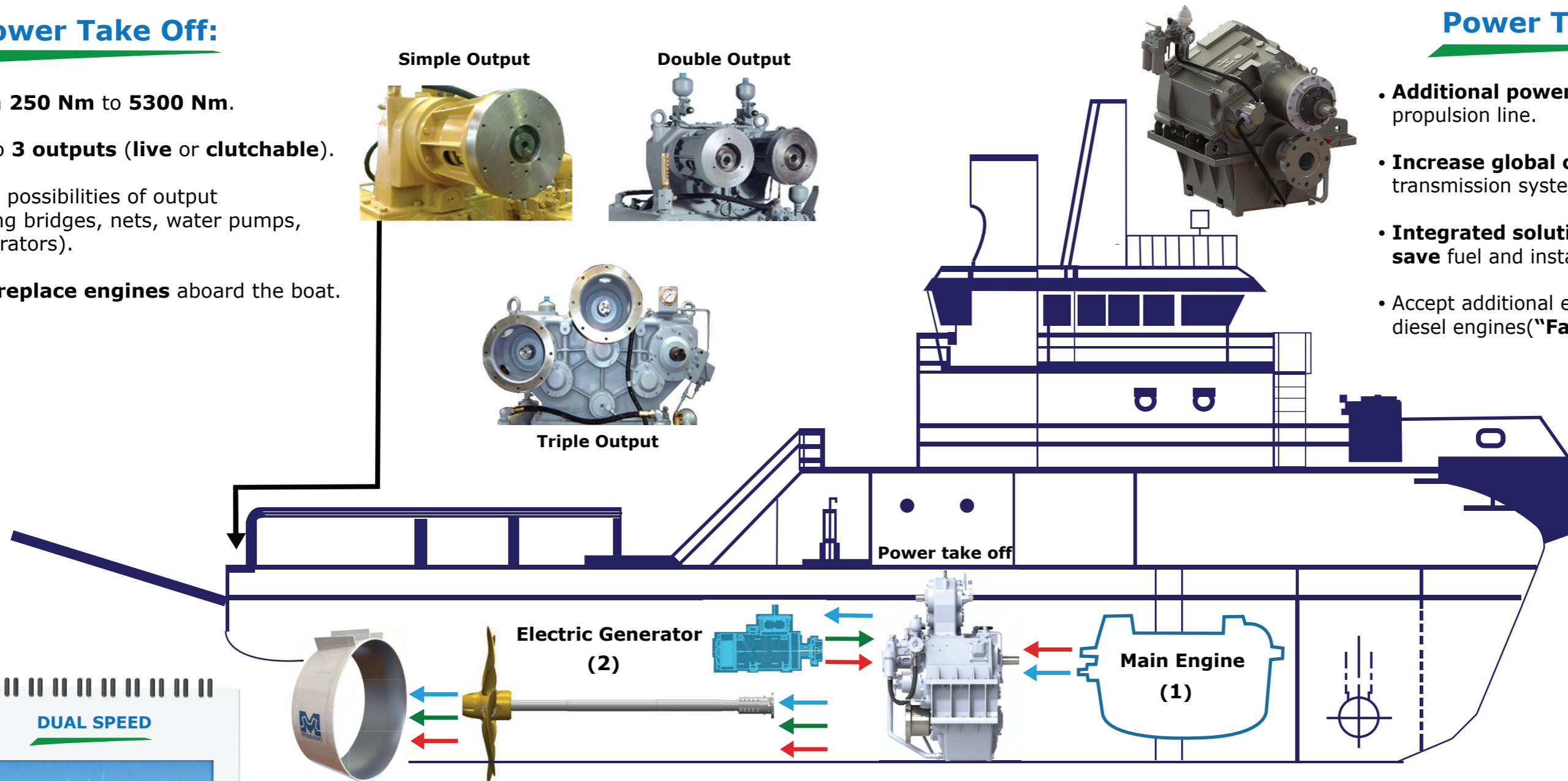
Double Output



Triple Output

Power Take In:

- **Additional power input** for the propulsion line.
- **Increase global compacity** of transmission system.
- **Integrated solution** leading to **save** fuel and installation costs.
- Accept additional electrical or diesel engines ("Father & Son" application).



DUAL SPEED



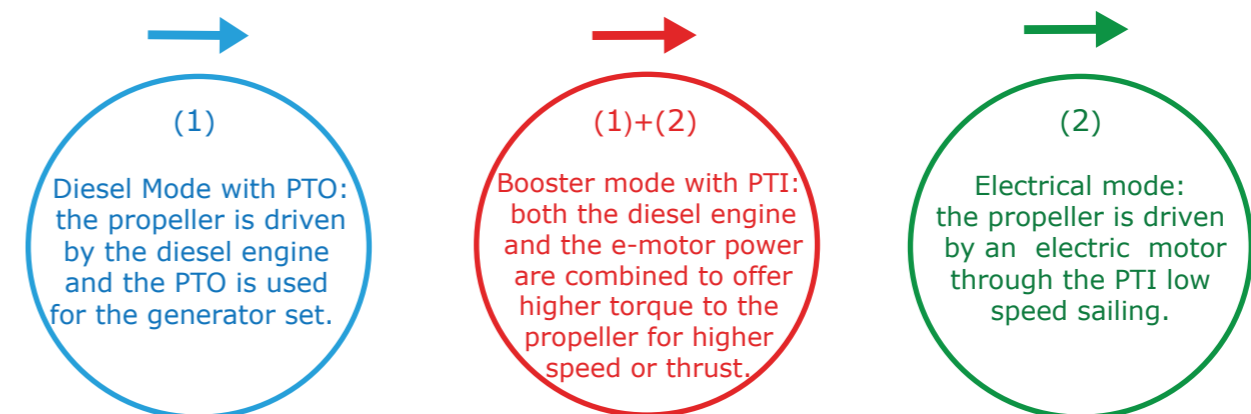
A Dual Speed (DS) gearbox allows you to have one gearbox with 2 ratios:

- Adaptable to a larger number of working conditions.
- Gain of space.
- Leads to fuel saving as the engine is working at maximum efficiency more often.



KRI RIGEL & KRI SPICA (Hydrographic ships)
Owner : National navy of Indonesia
Gearbox : MM W6400 + PTI 2 x Sets
Engines : Electric + Diesel
Equipment : Trolling mode + Shaft Brake Integrated

3 choices of working modes



CONTROLLER

QUALITY RELIABILITY PERFORMANCES

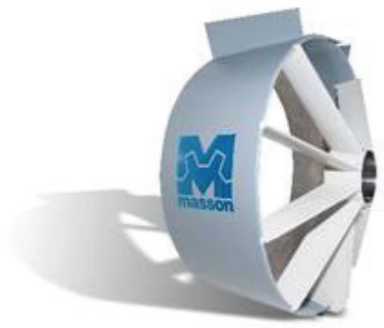


Control systems are a perfect answer to **smooth and easy shift** and **throttle control** suitable for most applications, modern styling, various color / finish control head options, **single to quad engine** capability. Designed specifically to meet the **performance, reliability endurance** and **aesthetic** requirements of today's modern boats.



PROPELLER PUMP & NOZZLE

QUALITY RELIABILITY PERFORMANCES



The **Masson Marine propeller pump** is a combination between **stator** (done with 7 blades) and a **rotor** (optimized propeller).

The water flow is **pre - rotated** and **accelerated** by the stator before being in contact with the propeller.

It leads in a **better spread of the pressure** on the whole surface and can increase the total **propulsion efficiency by 15%**, keeping the same propeller diameter.

The nozzle is a device used for ducted propellers in order to **increase the speed of the flow around the propeller**. This device leads to an increase of **20% of the thrust** for the **same size of propeller**.



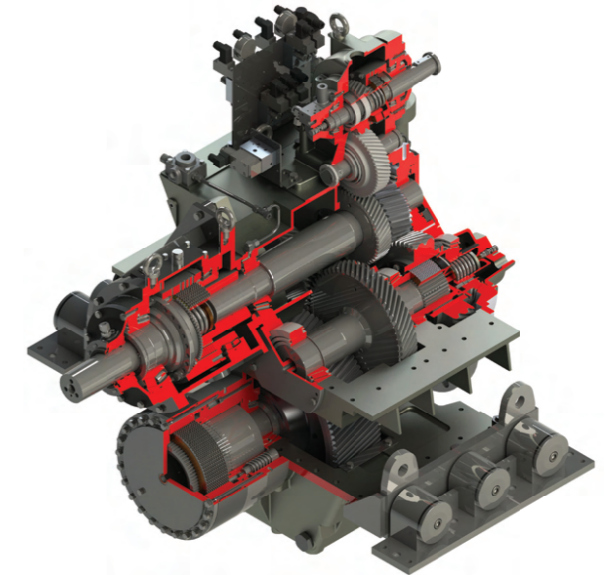
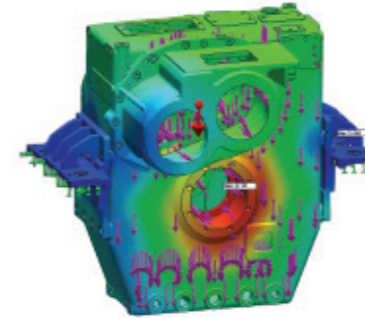
EXPERTISE

QUALITY RELIABILITY PERFORMANCES



A new level of control performance for inboard, outboard or stern - drive engines.

Masson Marine put its **expertise at your service**. Our experience is fully turned to satisfy your needs. Our team and **R&D engineers** are both competent in terms of **mechanical** and maritime engineering and will bring all the solutions to give you the best product.



Our expertise goes from the **calculation with dedicated** software to the marine engineering inside the vessel.

SERVICE

QUALITY RELIABILITY PERFORMANCES



SERVICE
QUALITY RELIABILITY PERFORMANCES

A key factor for our products long life...

Product	Function	Breakdown consequences	Recommended replacement
Oil Filter	Maintains clean oil	Damages the bearings	(Cleaning: 300 h) 2500 h
Accumulator	Allows smooth function of clutch command	Damages the clutch	15 000 h
Seal Kit	Maintains sealing	Leakages	15 000 h
Oil Cooler	Maintains oil temperature	Clutch Disc premature wear	15 000 h
Clutch Discs	Maintains positive clutch engagement	Slippage	20 000 h
Hydraulic Pump	Maintains oil pressure	Immobilization of the boat	20 000 h

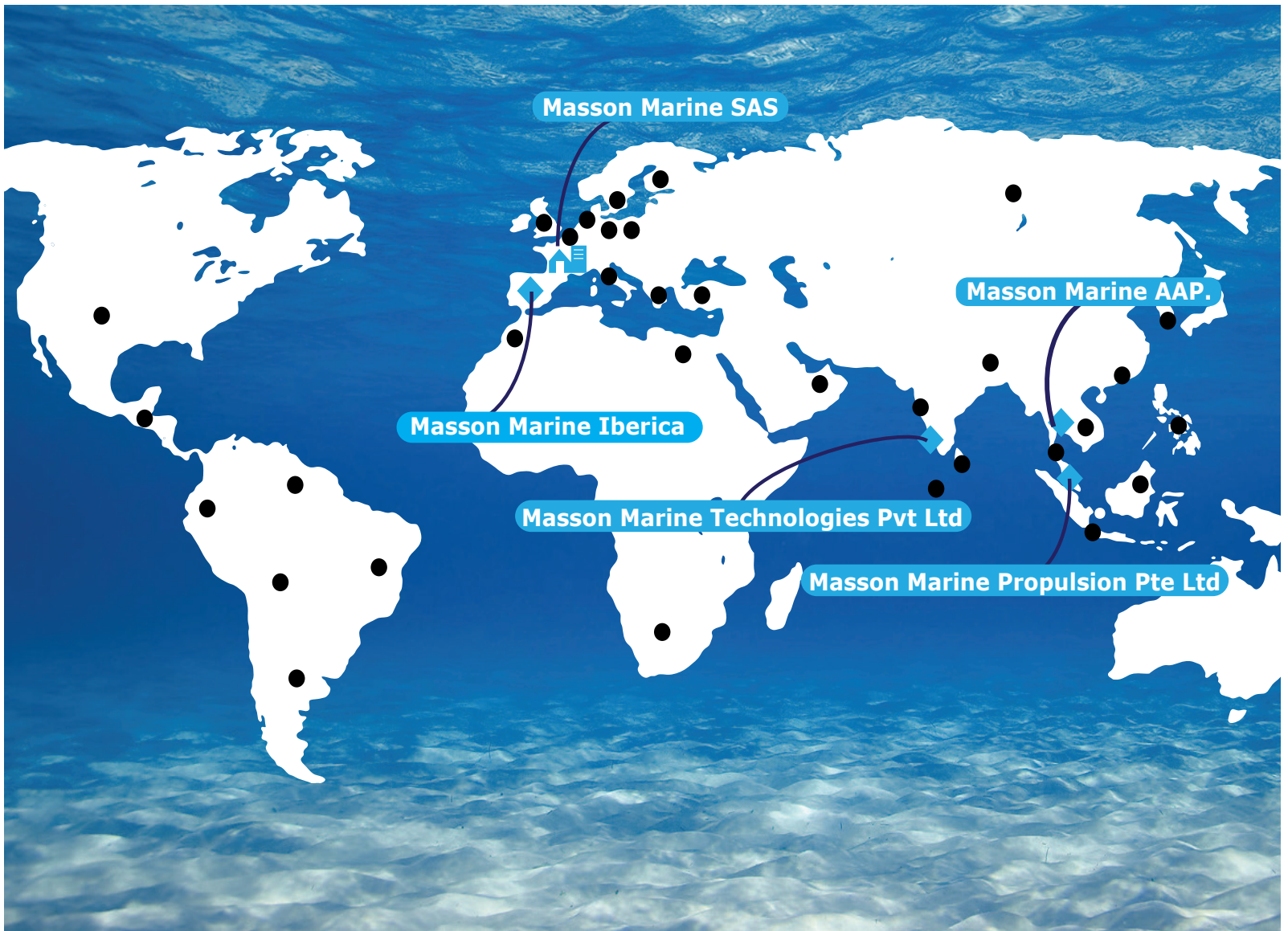
www.masson-marine.com

Masson Marine builds and assembles gearboxes from A to Z. **Regular maintenance** of your equipment is vital for its lifetime.

Our **experienced service network** is available worldwide and benefits from the support of our skilled. After Sale & Service department. To ensure the optimal operation of your Masson product, please refer to our maintenance schedule or to your nearest service partner for more details.

After Sales

- Worldwide Service Network (>30 dealers).
- Easy Maintenance (no specific tool required).
- Large stock of spare parts.
- Dedicated In-House Qualified Team supplying:
 - Technical analysis.
 - Spare parts recommendation.
 - Workshop manual.
- Dedicated Warehouse & Shipping Process.



● = Network dealers



Masson Marine SAS

France
 (Headquarter)
 Masson Marine SAS
 5 rue Henri-Cavallier
 89100 Saint Denis Les Sens
 Phone: +33 (0)3 86 95 62 00
 Fax: +33 (0)3 86 95 13 78
 Mail: contact@masson-marine.com

◆ **Masson Marine Propulsion Pte Ltd**

Singapore
 (Subsidiary)
 Masson Marine Propulsion Pte Ltd
 #08-114 TRADE HUB 21,
 18 Boon Lay Way, 609966 SINGAPORE
 Phone: +65 6795 0209
 Fax: +65 6795 0082
 Mail: sales@masson-marine.com

◆ **Masson Marine Iberica**

Spain
 (Subsidiary)
 Masson Marine Iberica
 Avda San Pablo 28, Nave 22
 28823 Coslada (Madrid)
 Phone: +34 91 671 47 66
 Fax: +34 91 674 78 33
 Mail: contact-mmi@masson-marine.com

◆ **Masson Marine AAP**

Thailand
 Masson Marine
 700/941 M.5 Amata City Chonburi
 Industrial Estate T. Nongkakha, A. Panthong,
 Chonburi 20160, Thailand
 Phone: +66 65 213 2244
 Fax: +66 38 212 387
 Mail: sales@masson-marine.com

◆ **Masson Marine Technologies Pvt Ltd**

India
 #2/122 B-1, Mylampatty Road, Kurathotam
 Karayampalayam , Coimbatore, Tamil Nadu
 641062, India
 Mail: sales@masson-marine.com

brochureMASSON240124 Copyright © Masson Marine, All rights reserved

Masson Marine products are available all over the world through our Network dealers



www.masson-marine.com

