

EM611

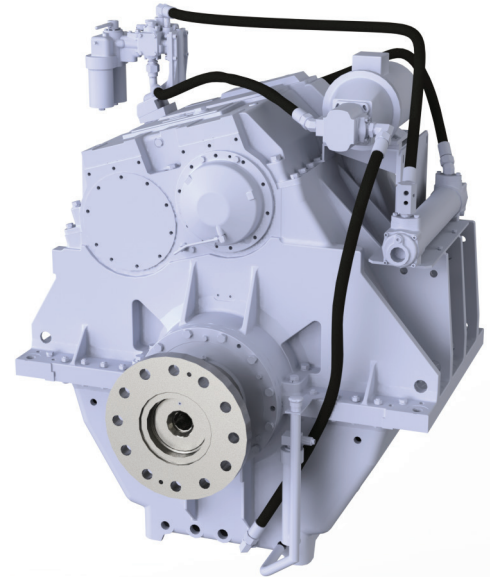
Gearbox for e-motor up to 4219 kW



MASSON INNOVATIVE PROPULSION

Model EM611

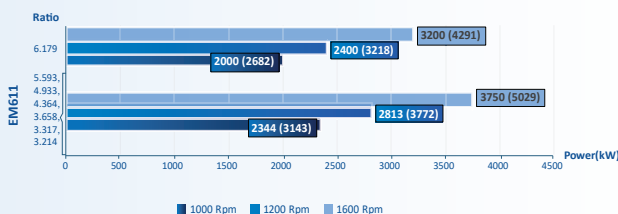
Power/RPM	kW/RPM (hp/RPM)	Maximum rated input	kW (hp)	Ratio	Maximum input RPM
2,344 (3,143)		4219 (5658)		3,214	1800
				3,317	
				3,658	
				4,364	
				4,933	
				5,593	
2,000 (2,682)		3600 (4828)		6,179	
Dry weight	kg(lb)	5700 (12570)			
Type	Vertical offset				



Description

- Robust design and easy onboard maintenance.
- Robust design also withstands continuous duty in workboat, dredger applications.
- Fully works tested, reliable and simple to install.
- Case hardened and precisely ground gear teeth for long life and smooth running.
- Robust cast iron casing for direct or remote mounting.
- Design, manufacture and quality control standards comply with ISO.
- Suitable for twin installation with 100% rated power in ahead and astern condition.

Sample Powers kW (hp)



Standard Equipment

- Oil cooler complete with fittings and rigid pipes.
- Free Standing.
- Lube Oil Pump.

Option

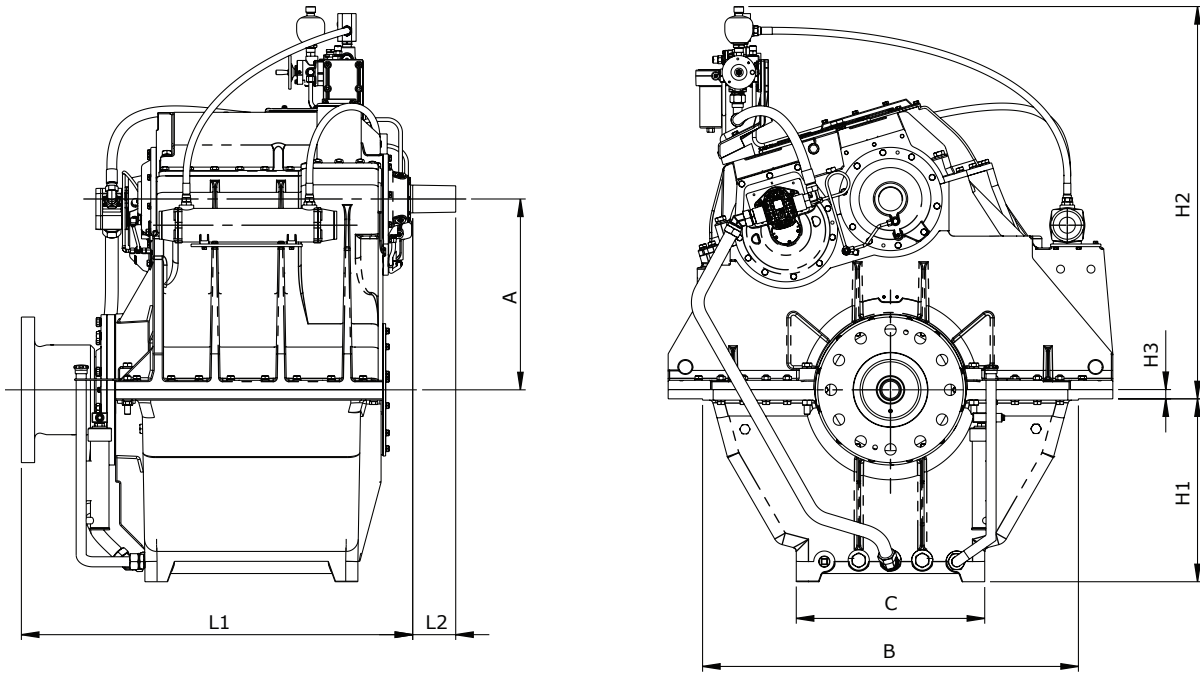
- Propeller shaft flange and coupling bolt set.
- Classification by all major Classification Societies on request.

EM611

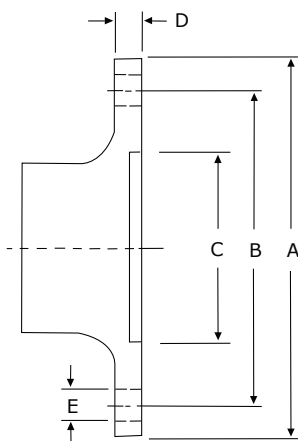
Gearbox for e-motor up to 4219 kW



MASSON INNOVATIVE PROPULSION



Model	A	B	C	H1	H2	H3	L1	L2	Dry Weight kg(lb)
	Dimensions in mm								
EM611	720	1420	712	685	1491	35	1479	163	5700(12570)



Output Coupling dimension

A		B		C		D		Bolt Holes		
mm	inch	mm	inch	mm	inch	mm	inch	No.	Diameter (E)	
									mm	in
550	21,7	450	17,7	280	11,0	50,0	1,97	12	43,0	1,69

Our products are available all over the world through our network of dealers

Dealer:

t.tran@masson-marine.com



MASSON INNOVATIVE PROPULSION