

EM540

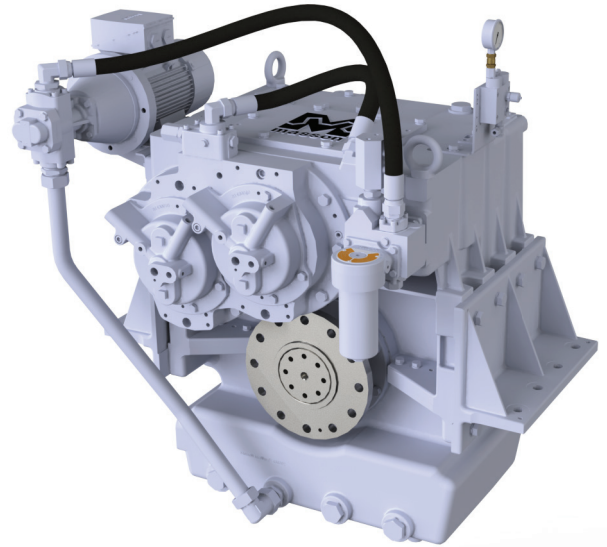
Gearbox for e-motor up to 1134 kW



MASSON INNOVATIVE PROPULSION

Model EM540

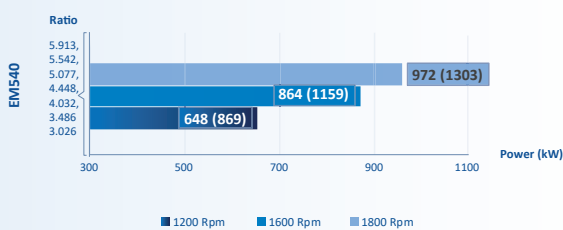
Power/RPM	kW/RPM (hp/RPM)	Maximum rated input	kW (hp)	Ratio	Maximum input RPM
0,540 (0,724)		1134 (1521)		3,026	2100
				3,486	
				4,032	
				4,448	
				5,077	
				5,542	
5,913					
Dry weight	kg(lb)	1270 (2800)			
Type	Vertical offset				



Description

- Robust design and easy onboard maintenance.
- Robust design also withstands continuous duty in workboat, dredger applications.
- Fully works tested, reliable and simple to install.
- Case hardened and precisely ground gear teeth for long life and smooth running.
- Robust cast iron casing for direct or remote mounting.
- Design, manufacture and quality control standards comply with ISO.
- Suitable for twin installation with 100% rated power in ahead and astern condition.

Sample Powers (kW/hp)



Standard Equipment

- Oil cooler complete with fittings and rigid pipes.
- Free Standing.
- Lube Oil Pump.

Option

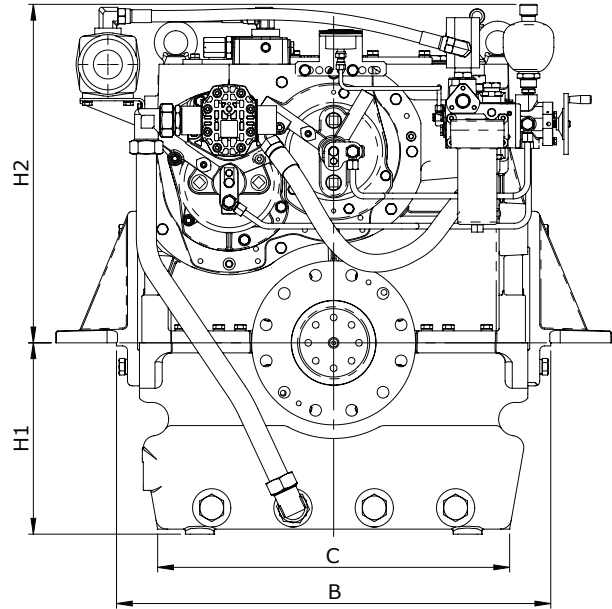
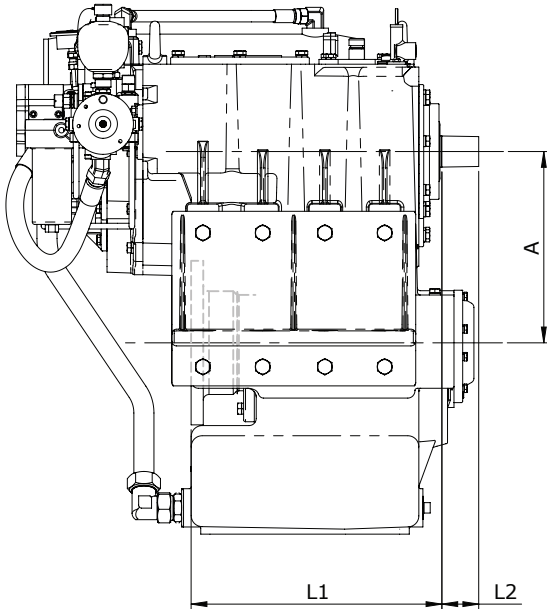
- Propeller shaft flange and coupling bolt set.
- Classification by all major Classification Societies on request.

EM540

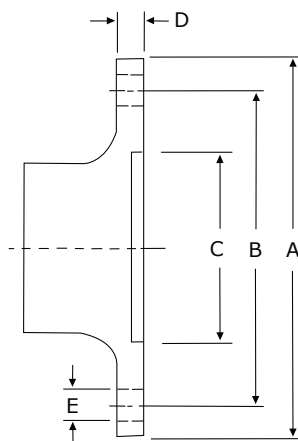
Gearbox for e-motor up to 1134 kW



MASSON INNOVATIVE PROPULSION



Model	A	B	C	H1	H2	L1	L2	Dry Weight kg(lb)
	Dimensions in mm							
EM540	400	908	800	400	705	524	77	1270 (2800)



Output Coupling dimension

A		B		C		D		Bolt Holes			
								No.	Diameter (E)		
mm	inch	mm	inch	mm	inch	mm	inch			mm	in
343	13,5	292,1	11,5	177,5	7	25,4	1	12		24,5	1

Our products are available all over the world through our network of dealers

Dealer:

t.tran@masson-marine.com



MASSON INNOVATIVE PROPULSION