

EM311

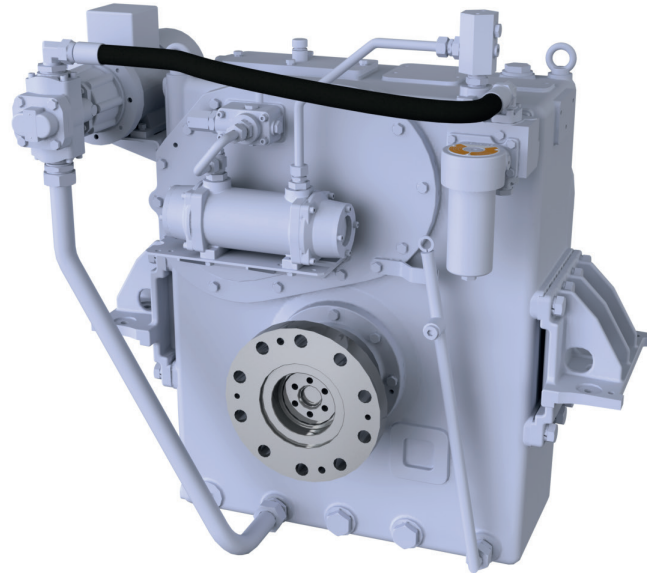
Gearbox for e-motor up to 684 kW



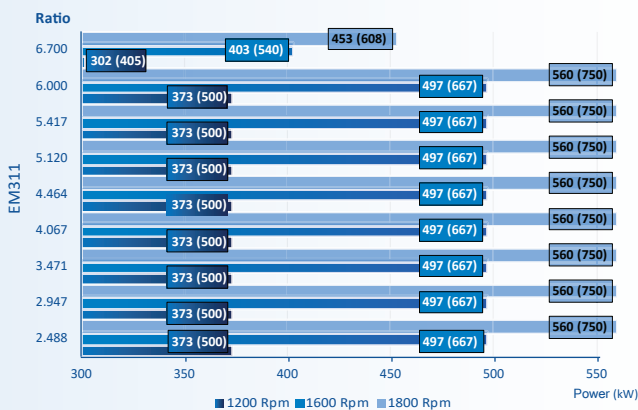
MASSON INNOVATIVE PROPULSION

Model EM311

Power/RPM	kW/RPM (hp/RPM)	Maximum rated input	kW (hp)	Ratio	Maximum input RPM
0,311 (0,417)		684 (917)		2,488	2200
				2,947	
				3,471	
				4,067	
				4,464	
				5,120	
				5,417	
6,000					
0,252 (0,338)		554 (743)		6,700	
Dry weight	kg (lb)	887 (1955.5)			
Type	Vertical offset				



Sample Powers kW (hp)



Description

- Robust design and easy onboard maintenance.
- Robust design also withstands continuous duty in workboat, dredger applications.
- Fully works tested, reliable and simple to install.
- Case hardened and precisely ground gear teeth for long life and smooth running.
- Robust cast iron casing for direct or remote mounting.
- Design, manufacture and quality control standards comply with ISO.
- Suitable for twin installation with 100% rated power in ahead and astern condition.

Standard Equipment

- Oil cooler complete with fittings and rigid pipes.
- Free Standing.
- Lube Oil Pump.

Option

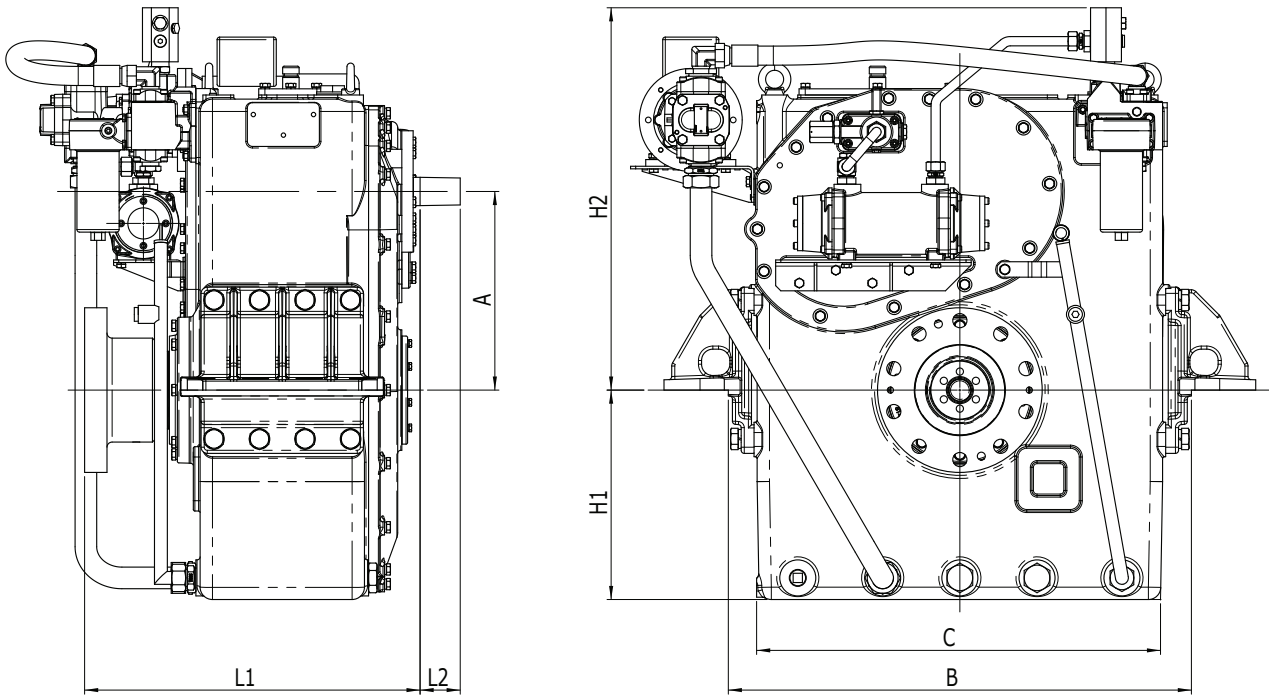
- Propeller shaft flange and coupling bolt set.
- Classification by all major Classification Societies on request.

EM311

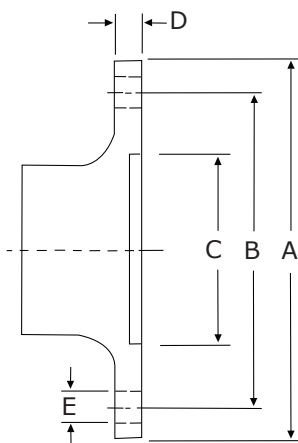
Gearbox for e-motor up to 684 kW



MASSON INNOVATIVE PROPULSION



Model	A	B	C	H1	H2	L1	L2	Dry Weight kg (lb)
	Dimensions in mm							
EM311	386	900	785	407	743	652	78	893 (1968.73)



Output Coupling dimension

A		B		C		D		Bolt Holes		
mm	inch	mm	inch	mm	inch	mm	inch	No.	Diameter (E)	
									mm	in
320	12,6	270	10,6	175	6,8	43,5	1,7	10	27,5	1,08

Our products are available all over the world through our network of dealers

Dealer:

t.tran@masson-marine.com



MASSON INNOVATIVE PROPULSION